

# 2011

1999

"

"

( " " )

(1999)23

1999 3 18

2000 9 1

2

12,000

A

2000

9 19

2010 9 21

2,190,952,457

2010 10

18

2011 12 31

3,875,752,457

X120 N610E

9%Ni

300

30

2011

764.52

12.91%

721.93

16.49%

684.09

8.40%

"

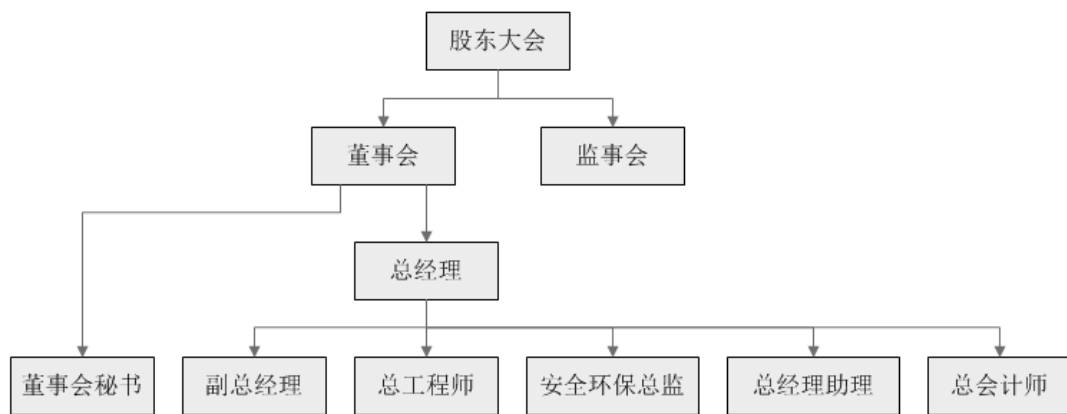
"

"

"

"

"



4

2011

2011 " "

2011 7

" " 2011 12

" "

2010

2012 1 1

2011 8

2012

2012

"

"

2011

2010

2011

2011

2011

34

2011

2011 6 30 3,875,752,457

10 2.00 ( )

775,150,491.40 19.59

4.58

2011	11,385												
<table border="1" style="width: 100%; border-collapse: collapse;"> <tr> <td style="width: 50%;"></td> <td style="width: 50%;"></td> </tr> <tr> <td style="width: 50%;"></td> <td style="width: 50%; text-align: center;">8,999</td> </tr> <tr> <td style="width: 50%;"></td> <td style="width: 50%; text-align: center;">1,141</td> </tr> </table>				8,999		1,141	<table border="1" style="width: 100%; border-collapse: collapse;"> <tr> <td style="width: 50%;"></td> <td style="width: 50%;"></td> </tr> <tr> <td style="width: 50%;"></td> <td style="width: 50%; text-align: center;">1,898</td> </tr> <tr> <td style="width: 50%;"></td> <td style="width: 50%; text-align: center;">2,483</td> </tr> </table>				1,898		2,483
	8,999												
	1,141												
	1,898												
	2,483												
( ) 1													

2009—2011 698

2009—2011 144

2011

18

( ) 12%

"

"

1 2011

838 37028

12 81

6 "

800 9 40 1358

1252

96 798 249 109

2

60% 30%

40%

3

" "

10

30

30

"

"

2011

1260

58

15800

388

108

"

"

"

" "

" "

"

"

"

"

"

"

"

2011

" 10.5"

"

"

6702

2011

2014

4

6

3

10

2011

2

2011

2011

"

NM400/NM450"

2009

"

S355NL"

2010

"

N610E(12MnNiVR)"

3

" LNG

9%Ni

" "

48MnV

" "

NM400/nm450" "

Q890" " NNS

"

5

" E36

" "

" "

" "

" "

N610E(12MnNiVR)

" "

"

6

"

"

"

"		2011		
3		32	13	6
	"	"		
		2011	137	
79				
	2011		0.82	
		2011		0.084
	11.19		8.45	
8.83		206.17		
		"		"
		614		5
	3.69m <sup>3</sup>	0.18m <sup>3</sup>	19.01	KWh
	58.41%	9.41		
	SO <sub>2</sub> 1,406	COD 10		100%
	97			
99.17%				

15

7389

3694

"

"

"

"

ISO14001

"

"

"

"

97%

2011

90%

1722

14

S355K2N 35MnQH 19

40Cr

Q345A

100

2012

" "